

TEXAS FACILITIES COMMISSION (TFC) PRESENTS

Meet The Prime

Webinar Series

Our Legacy: Build. Support. Maintain.



Featured Prime Contractor: JE Dunn Construction

June 30, 2020 at 1pm

OVERVIEW

- **TFC Overview**
- **JE Dunn Construction Overview**
- **Q&A**





Texas Facilities Commission (TFC)

HOW TO EXPLORE BUSINESS OPPORTUNITIES

OVERVIEW

- **Who is TFC?**
- **HUB Program Initiative Plan**
- **Next Steps...**
- **A Legacy In The Making**
- **Upcoming Webinars**



WHO IS TFC?



TFC

TFC is the state agency responsible for all state-owned & leased facilities. Our footprint is **28M sqft.** of office, garage and warehouse, we support over **100 state agencies** and we are in **283 cities** in Texas. Includes TX School for the Deaf and TX School for the Blind & Visually Impaired.



TFC Programs

Facilities Design and Construction
Property Management
State & Federal Surplus Programs
State Leasing Services
TFC Warehouse (Our Own Home Depot)



Building Texas

84th Legislative Session: Rec'd \$1.1B for Capitol Complex & North Austin Complex Phase 1 & \$270M in DM
86th Legislative Session: Rec'd \$600M for the Capitol Complex & North Austin Complex Phase 2 & \$120M in DM



TFC HUB PROGRAM INITIATIVE PLAN



Preparation

- Register as a vendor with the Texas State Comptroller
- Get HUB certified with the Texas State Comptroller
(Administrator of the State-wide program)
<https://comptroller.texas.gov/purchasing/vendor/>
- The HUB Program is not a 'SET-A-SIDE' Program. All Contracts are Competitively Bid.



Connection

- Networking with State,Primes & Industry Organizations
- Build **RELATIONSHIPS**
- Seek assistance from the Small Business Development Centers & Minority Trade Organizations
- Attend Bid Conference & Industry related Meet & Greets



Education

- Understanding of state procurement
- Obtain required certifications needed to work with TFC (OSHA, Bonding & Insurance)
- Attend special business training events
- Know your business capacity when bidding
- Do your research
- Know how to price in different markets & cities



A Legacy In The Making



Texas Mall – View from North



A Legacy In The Making



1601 Congress Building



A Legacy In The Making



Central Utility Plant



A Legacy In The Making



TEXAS FACILITIES COMMISSION NORTH AUSTIN COMPLEX



NEXT STEPS...

2 Easy Ways to Explore Business Opportunities

With the Texas Facilities Commission (TFC)

Interested in doing business with TFC? Let us guide you thru the process.

SCHEDULE MEETING



Make an appointment
TFC HUB Webpage

<http://www.tfc.state.tx.us/divisions/commissionadmin/prog/HUB/>

ONLINE FORM



Fill out the Intake form and we will contact you
More Questions? Email us at
hub@tfc.state.tx.us



UPCOMING WEBINARS

TEXAS FACILITIES COMMISSION (TFC) PRESENTS

Meet The Prime *Webinar Series*

Our Legacy: Build. Support. Maintain.



<http://tfc.state.tx.us/divisions/commissionadmin/prog/HUB/>



QUESTIONS??

Contact Us: HUB@tfc.state.tx.us

Yolanda C. Strey
HUB Director
512.516.5878

Shonte Gordon
HUB Coordinator
512.201.9700

Stacy Peters
HUB Specialist
512.608.1357

Follow Us On:



Texas Facilities Commission HUB Program presents:

MEET THE GENERAL CONTRACTOR

with **JE DUNN CONSTRUCTION COMPANY**



DUNN diversity

SAFETY MOMENT

SAFETY is our #1 PRIORITY

◀◀ WE BELIEVE IN DOING THE RIGHT THING ▶▶




DUNN safety[®]
EVERYONE.
EVERYWHERE.
ALL THE TIME.

AGENDA

Welcome & Introduction

Safety Moment

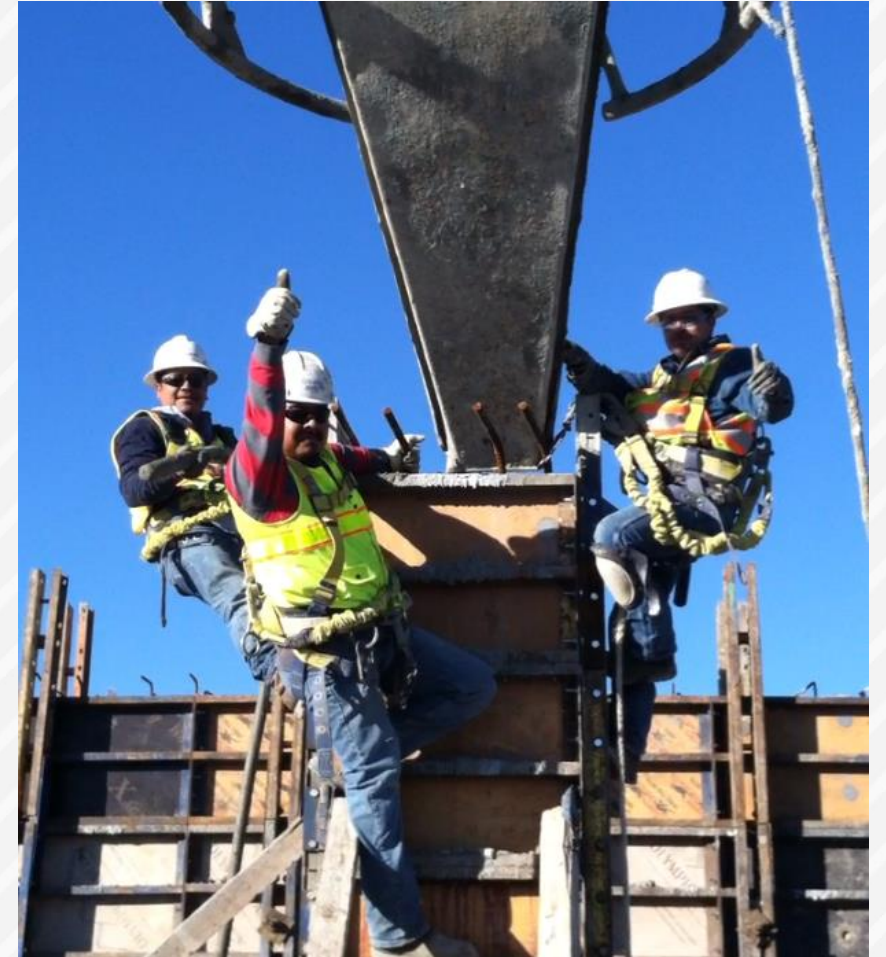
JE Dunn Construction

MCD Program

Upcoming Opportunities

SMS Registration

Q & A



JE DUNN CONSTRUCTION

- Established in 1924
- 22 Offices
- 3,000 Employees
- Ownership



DUNN FAMILY



ESOP



MARKETS AND RANKINGS

MARKETS

Advanced Industries
Aviation
Corporate Environments
Corrections & Justice
Courthouse
Energy & Utility
Healthcare
Higher Education
Historic Preservation
Hospitality

Industrial
Local & State Government
Mission Critical
Mixed Use & Retail
Multi Family & Student Housing
Parking Structures
Performing Arts & Entertainment
Science & Technology
Sports & Recreation

ENGINEERING NEWS-RECORD (ENR) RANKINGS FOR JE DUNN CONSTRUCTION



SOUTH CENTRAL REGION



- Operating in Houston Area for over 22 years

- Revenue



SOUTH CENTRAL



NATIONWIDE

AUSTIN OFFICE STATS

- Office opened in 2007
- 2020 Projected Sales: \$380M
- 200+ Team Members



SQAURE FEET OF
WORK IN
CENTRAL TEXAS



COMPLETED IN
IN CENTRAL
TEXAS



WORK
PROGRAM IN
AUSTIN

NOTABLE LOCAL PROJECTS



DIVERSITY PROGRAM

3 PILLARS OF DIVERSITY & INCLUSION



MARKETPLACE

+



WORKFORCE

+



WORKPLACE

**high
inclusion**
=
**high
engagement**

The logo for JEDUNN CONSTRUCTION, featuring a stylized 'D' icon and the company name in a bold, sans-serif font. The logo is set against a background of green and black diagonal stripes.

UPCOMING PROJECTS



SUBCONTRACTOR MANAGEMENT SYSTEM

The screenshot shows a web browser window with the URL sms.jedunn.com/required_documents. The page header features the JE DUNN CONSTRUCTION logo and navigation links: Work With Us, Insights, Careers, News, and a search icon. The main heading is "List of Required Documents". A left sidebar contains sections for "NAVIGATION", "ACTIONS" (with a "Login" link), "RESOURCES" (with links for "List of Required Documents", "Frequently Asked Questions", "Contact Us", "Disclaimer", "Privacy Statement", and "Pursuit Notification"), and "JE DUNN PROGRAMS & POLICIES" (with a "Safety Program" link). The main content area includes a paragraph: "This document outlines all required information to complete a prequalification with JE Dunn Construction." followed by a numbered list of 12 items: 1. General Information, 2. Company classification, 3. Locations, 4. Accounting Information, 5. Financial Statements, 6. Banking, 7. Bonding, 8. Letter of Bondability, 9. Trade References, 10. Project References, 11. Safety Information, and 12. Experience Modification Rate (EMRI).



1. www.jedunn.com → Work With Us
→ For Trade Partners
2. Click “Create and Account/Add User”
3. “List of Required Documents”
under RESOURCES



We look forward to working with you!

CONTACT INFORMATION

INDRIA HOLLINGSWORTH

Diversity and Inclusion Manager, South Central Region

214.389.7531

indria.hollingsworth@jedunn.com

BRIAN HAULOTTE

Vice President, Preconstruction Services Director

512-687-6116

brian.haulotte@jedunn.com